



H-Brake Hybrid+ 230T Ultra

Unfold the future

All SafanDarley's experience and technical ingenuity in efficient press brake drives and controls, is combined in the new SafanDarley H-Brake Hybrid+. This model is an extension of the existing Hybrid range and is available with Higher Tonnages, customised cylinders with longer stroke and flexibility in machine size, throat gap and daylight opening.

The result is an extremely functional design that satisfies current and future requirements. At its core is the advanced dual hybrid drive for the press brake ram. This consists of a servo-electronic motor and a hydraulic pump, a combination that produces a remarkably quiet system, with high approach and return speeds and extremely low energy consumption.

Hydraulic pressure drives the press brake ram, but the direction of AC servomotors determines the direction of the ram movement. Hydraulic fluid is not constantly on the move as it is with conventional hydraulic systems.

In Hybrid press brakes, fluid flows only when the press brake ram is moving. The most notable feature of these systems is that the classic proportional valves and their associated switching times are eliminated. In a hydraulic press brake, the valve-switch time is most notable when the ram transitions from a high-speed approach to low-speed bending, and again between low-speed bending to the high-speed return stroke. In a hybrid press drive, when the pump speed or direction changes, the ram's speed and direction do the same immediately, therefore no switching time required. It also completely eliminates the oil heating up and, consequently, uses just a very small quantity of oil, without any need for a heat exchanger.

Less energy, more output

The fast approach and bending force are controlled by the variable-speed drive. The return stroke partly takes place using temporarily stored hydraulic energy.

This H-Brake Hybrid+ is an exemplary model of sustainable thinking in the Smart Industry. High Productivity, Low operational costs and high energy efficiency characterise this new, unique hybrid concept. A superior combination of hydraulics and electronics.

Performance

Due to dynamic Y-Axis control with high approach/return speed and fast response times, it decreases the overall cycle time and, therefore, the H-brake Hybrid+ press brake has higher productivity compared with conventional hydraulic press brakes.

Energy efficiency

The most significant benefit of this system is the drastically reduced power consumption.

Reducing your company's energy consumption is important because it enables you to:

- Reduce costs – this is becoming increasingly important as energy costs rise.
- Reduce carbon emissions and the environmental damage that they cause.
- Reduce risk – the more energy you consume, the greater the risk that energy prices increase.



Higher
productivity



Energy saving,
low CO2 emissions



Less oil required and
Eliminates the oil heating



Noiseless
operation

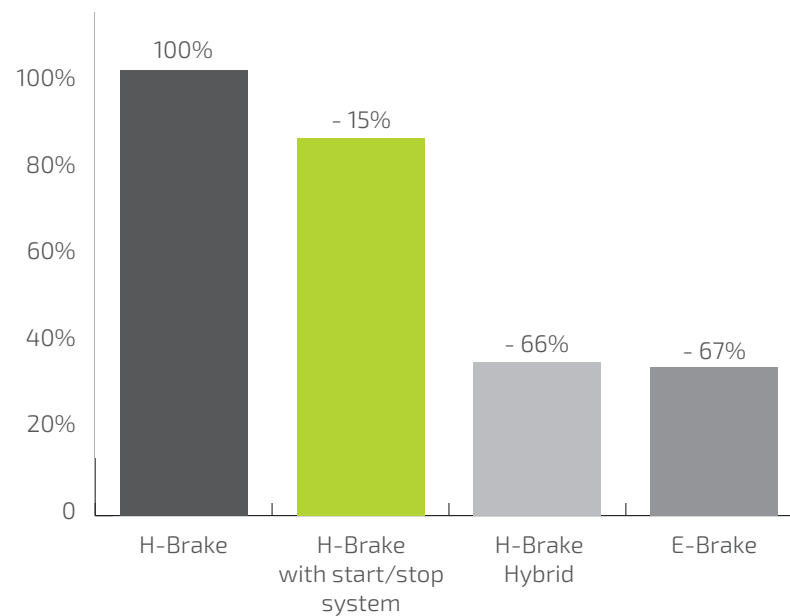


Low Maintenance

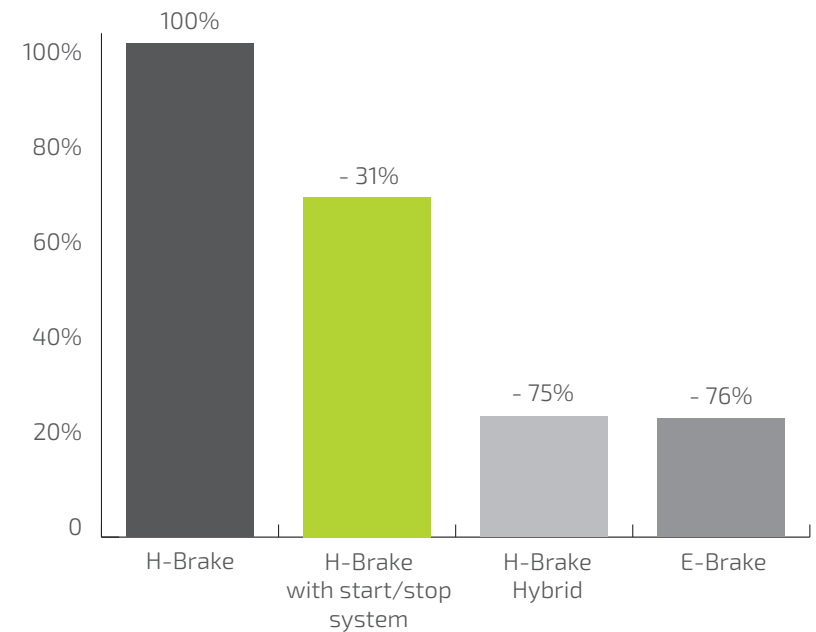
Consumption data - Energy consumption

Consumption data: Hydraulic, Hybrid and Electric press brake. Based on similar tonnages and bending lengths

2000 working hours - Interval between 10 sec.

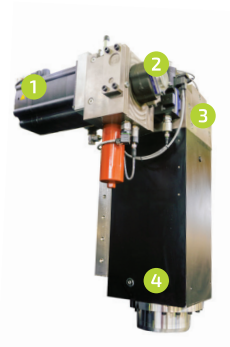


2000 working hours - Interval between 30 sec.

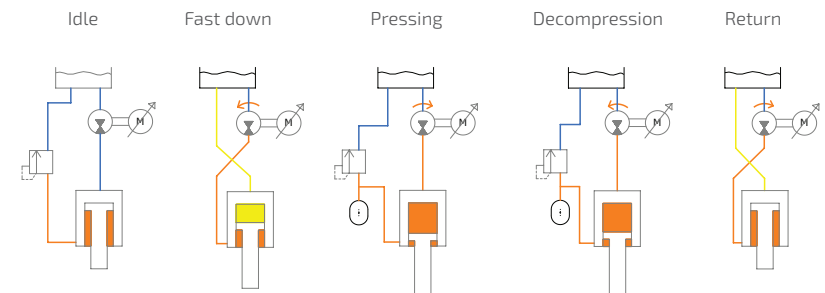


H-Brake Hybrid+ 230T Ultra

Approach speed	200 mm/sec
Pressing speed	10 mm/sec
Return speed	200 mm/sec



- 1 Servo motor (Lenze)
- 2 Pump
- 3 Valve block
- 4 Cylinder



Connected with the smartest solutions in sheet metal working



SafanDarley B.V., Kwinkweerd 11, NL-7241 CW Lochem | P.O. Box 96, NL-7240 AB Lochem
Tel.: +31 (0)573 222 222, Fax: +31 (0)573 222 299 | E-mail: info@safandarley.com | Website: www.safandarley.com

Watch our
corporate
movie here:

