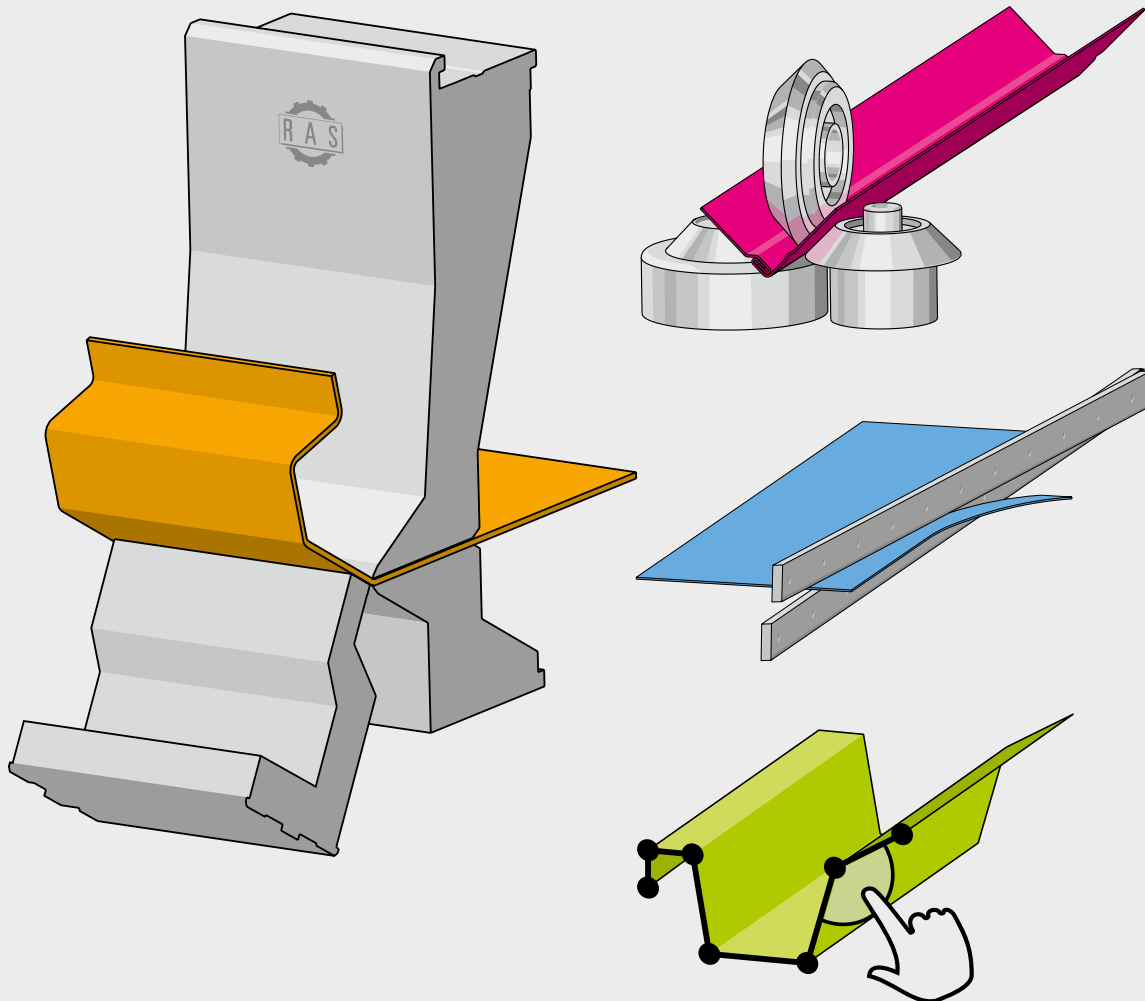


# Production Program



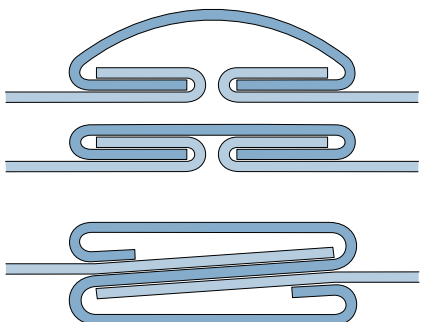
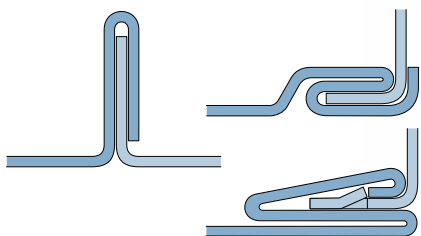
CUTTING

BENDING

FORMING

SOFTWARE

# SpeedySeamer



Standing seam, Pittsburgh seam, Snaplock seam, and „S“ seam



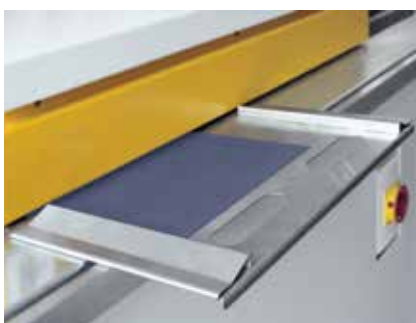
„S“ seam and drive cleat



Set of rolls for Pittsburgh seam



SpeedySeamer with lubricant spraying unit for stainless steel applications.

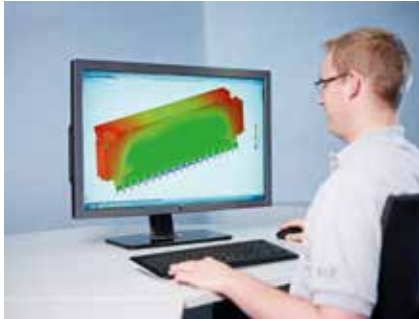


Small part material guide



Snaplock joint

Technical data	Sheet thickness max.	Rollforming stations	Speed ca.
SpeedySeamer RAS 22.09	1.5 mm	9	16 m/min.
SpeedySeamer RAS 22.07	1.5 mm	7	16 m/min.



Design



Sawing



Plasma cutting



Milling



Turning



Grinding



Welding



Powder coating



Assembly



Electrical assembly



Quality inspection



RAS - Regional production for global sustainability





Headquarters in Sindelfingen. In the foreground „Steel object“.



Effringen - factory and artwork



RAS Systems LLC in Georgia, USA



Founder Wilhelm Reinhardt



Managing Directors Rainer Stahl, Matthias Huber und Willy Stahl

All sheet thickness refer to 400 N/mm<sup>2</sup>  
tensile strength. Subject to changes.  
Pictures may show options.