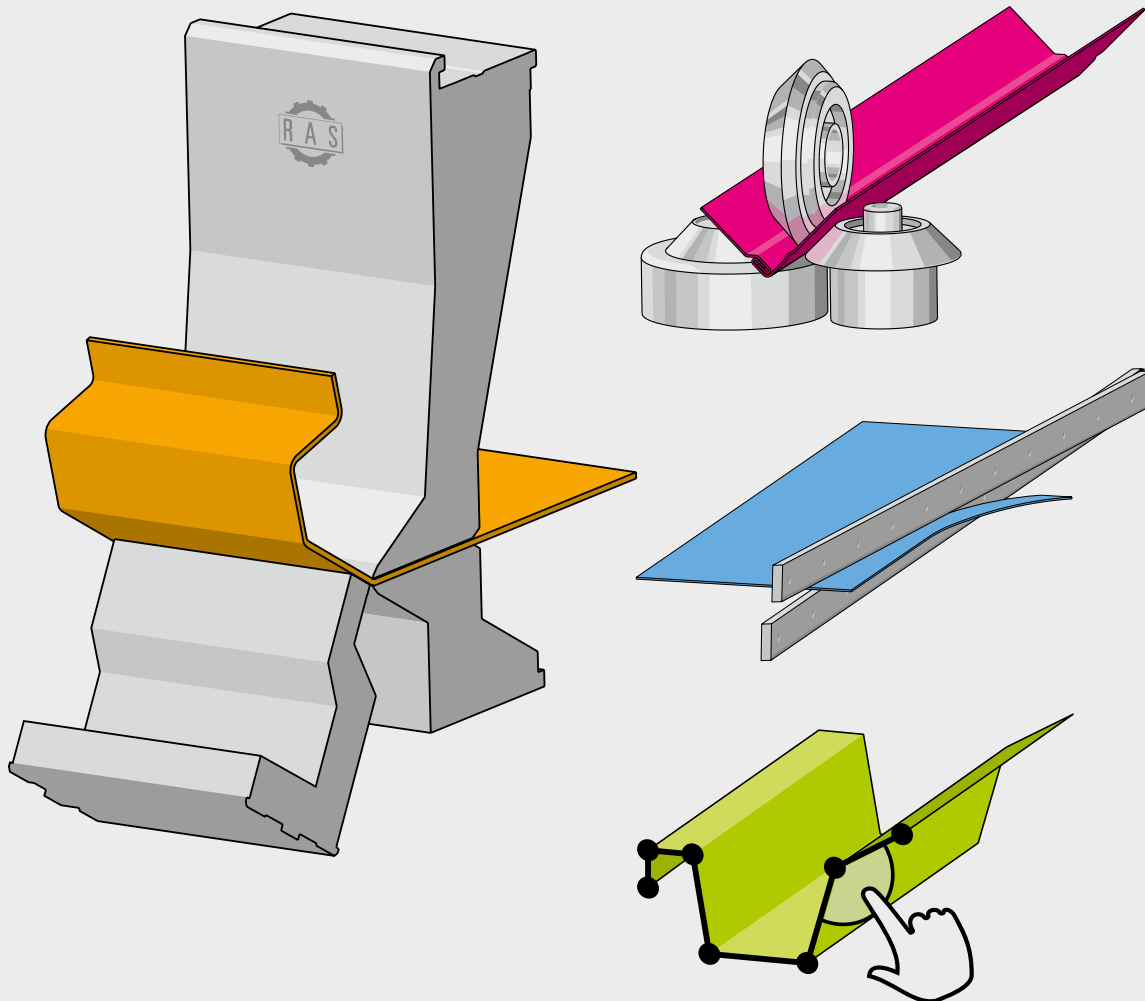


Production Program



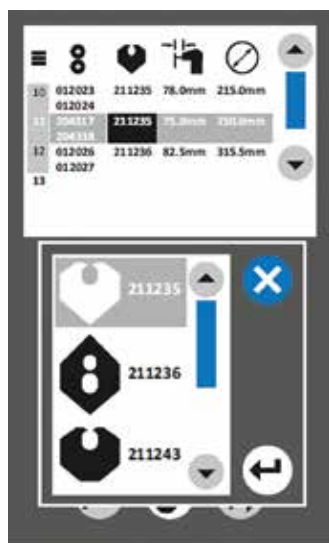
CUTTING

BENDING

FORMING

SOFTWARE

EasyFormer



Ideal user-friendliness with the 7" touch control. Programs can be saved with additional information.

„Teach“ function and „Automatic“ function



Flanging wheels FL: Flanging without swiveling the part.



Crimping bead



Double seaming wheels



Swaging wheels for insulation work



Screw-in seam



Hose seam for hydraulic pipes



7" Touch control

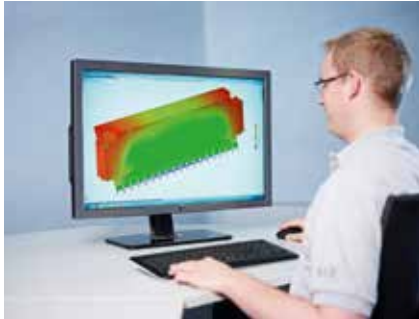


Stop plate for insulation pipes



UnLock function opens the wheels immediately in an emergency.

Technical data	Sheet thickness max.	Wheel center distance	Working depth max.
EasyFormer RAS 12.65-3	3.0 mm	100 mm	400 mm
EasyFormer RAS 12.35-3	1.75 mm	63 mm	255 mm



Design



Sawing



Plasma cutting



Milling



Turning



Grinding



Welding



Powder coating



Assembly



Electrical assembly



Quality inspection



RAS - Regional production for global sustainability



Headquarters in Sindelfingen. In the foreground „Steel object“.



Effringen - factory and artwork



RAS Systems LLC in Georgia, USA



Founder Wilhelm Reinhardt



Managing Directors Rainer Stahl, Matthias Huber und Willy Stahl

All sheet thickness refer to 400 N/mm²
tensile strength. Subject to changes.
Pictures may show options.